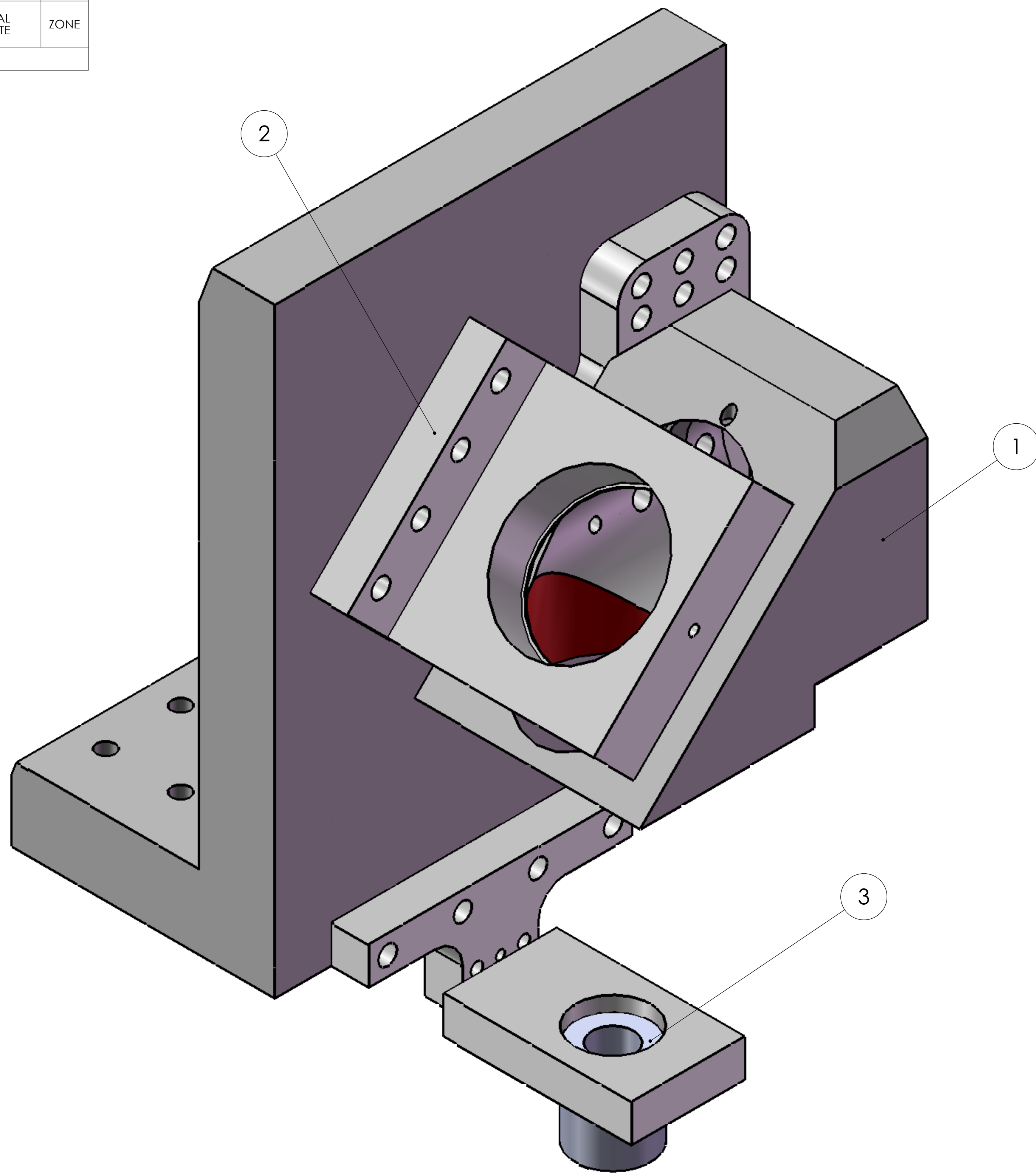


QTY REQ'D	ITEM NO.	REF DES	CAGE NO.	PART OR IDENTIFYING NO.	NOMENCLATURE OR DESCRIPTION	SPECIFICATION	MATERIAL OR NOTE	ZONE
1	3		10-024	IRTF_Holder Optic 2&3			AL 6061	
1	2		10-023	IRTF_Degree Mirror holder v1			AL 6061	
1	1		10-022	IRTF_Optics holder one_v1 part 2			AL 6061	

PARTS LIST

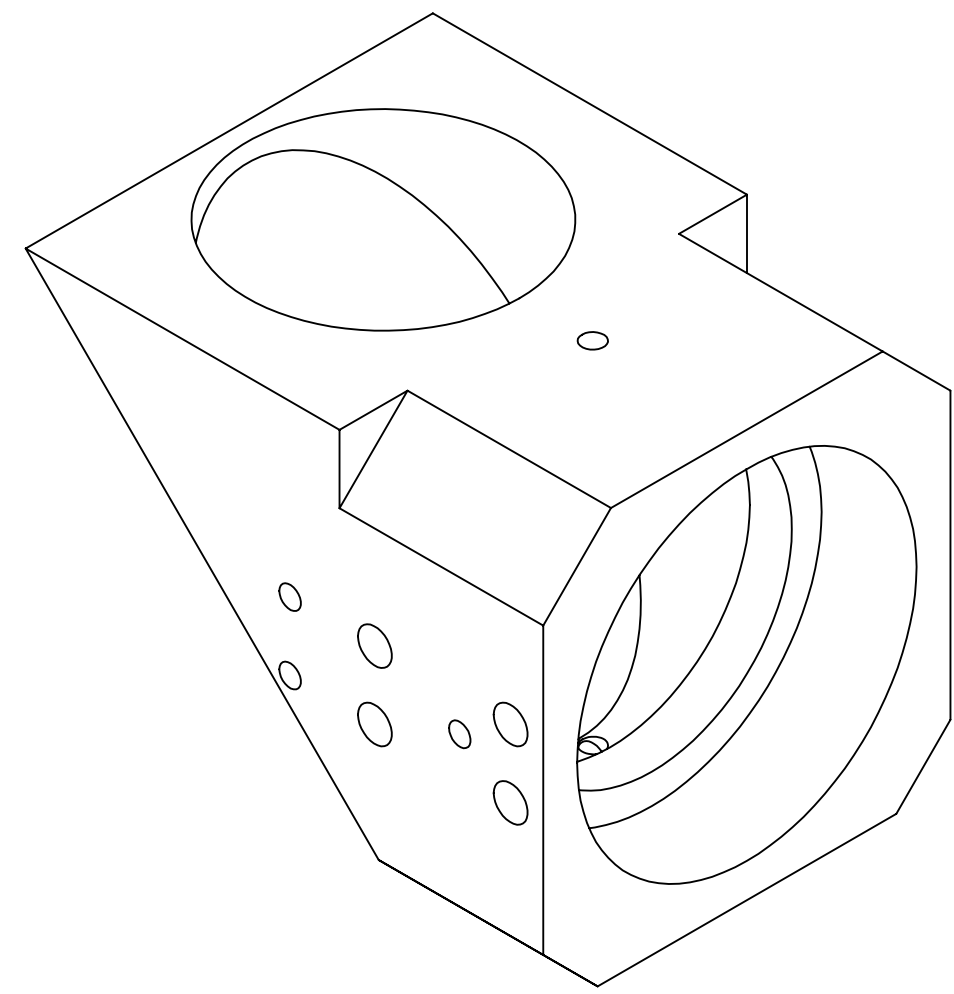


- 3. FIT TO ASSEMBLY 10-010
- 2. ALIGN USING DOWELL PINS
- 1. REMOVE ALL BURRS AND SHARP EDGES .003 TO .010

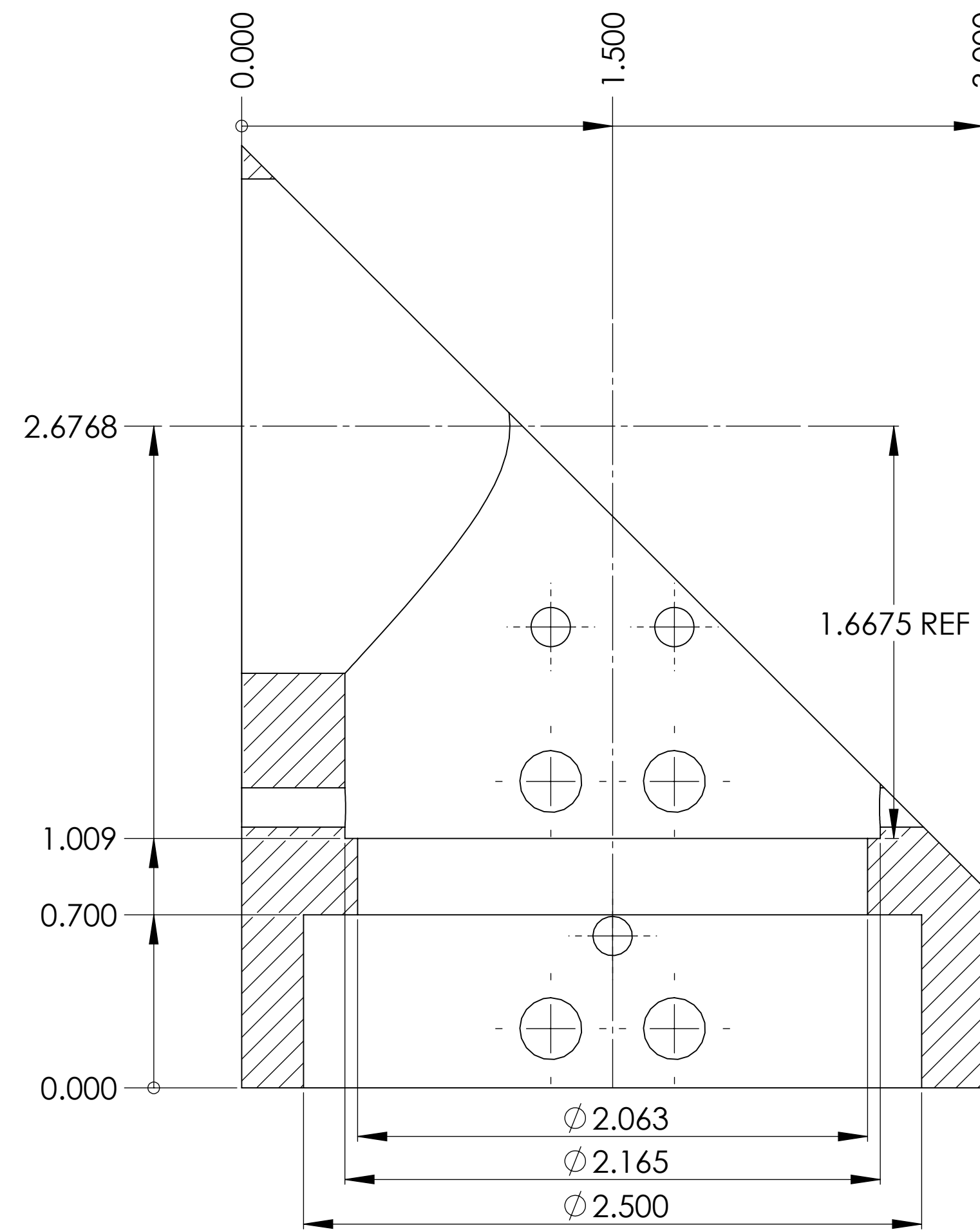
NOTES: UNLESS OTHERWISE SPECIFIED

CONTRACT NO		Folkers E. Rojas UROP Production <i>Massachusetts Institute of Technology Boston, MA 02139</i>			
APPVD	DATE				
DWN	F.E. Rojas	POETS on IRTF Optic Holders Assembly			
CHK					
STRCT					
MATL					
ENGR		SCALE	CAGE NO	FILE:	REV
		D	10-021	Sub-Assembly	A
MATERIAL		SCALE 2/1		UNCLASSIFIED	
NEXT ASSEMBLY USED ON					
APPLICATION					

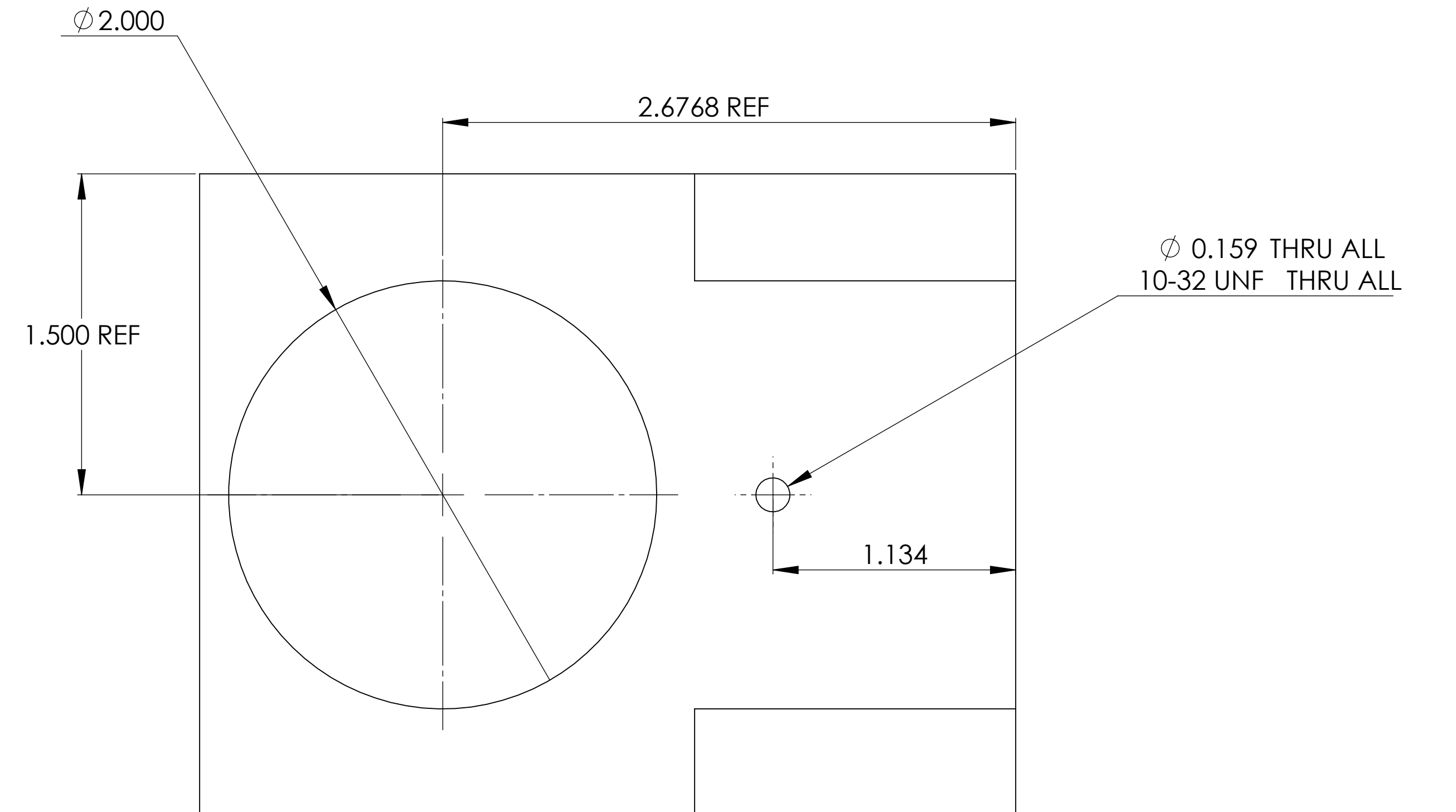
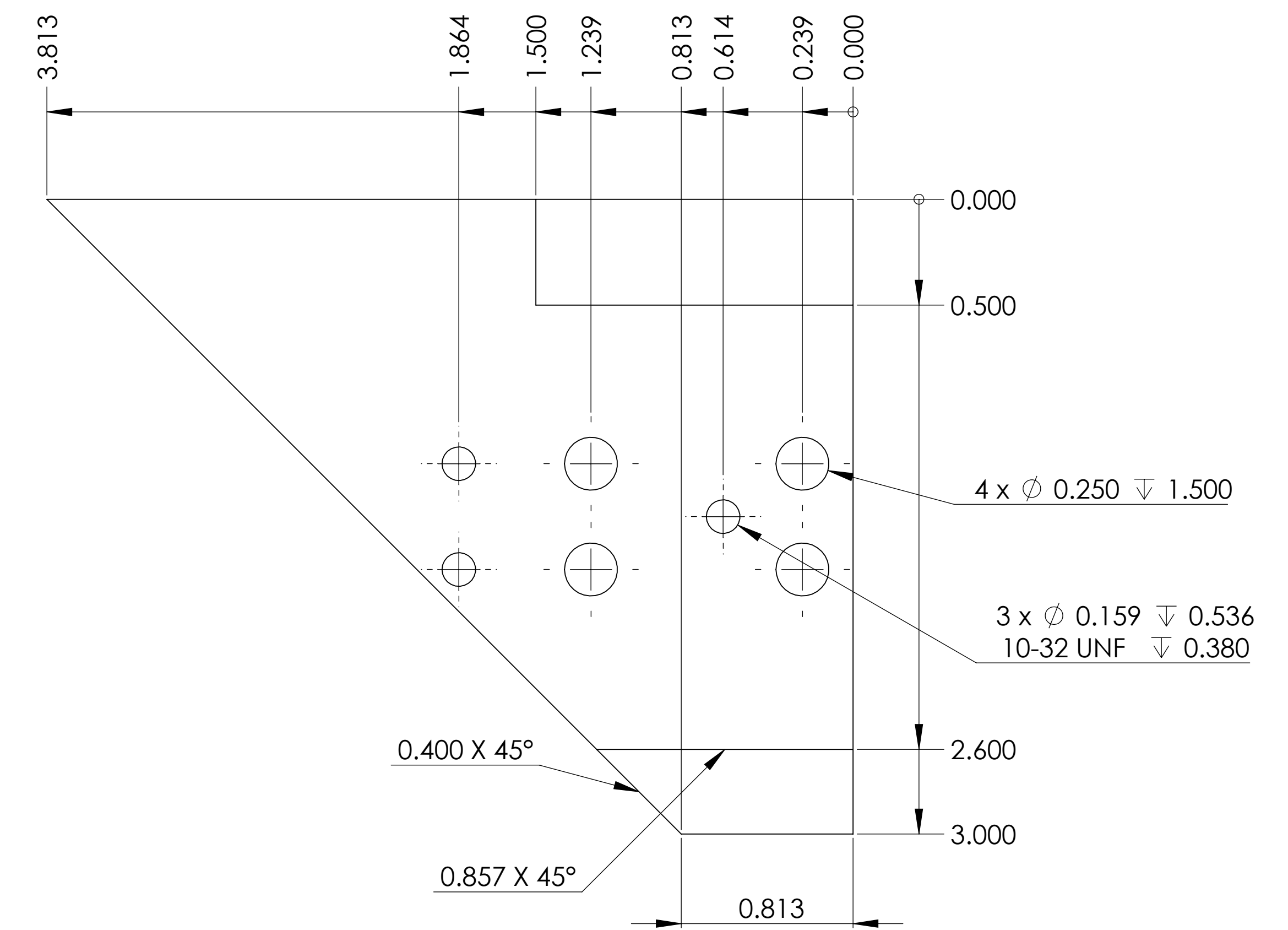
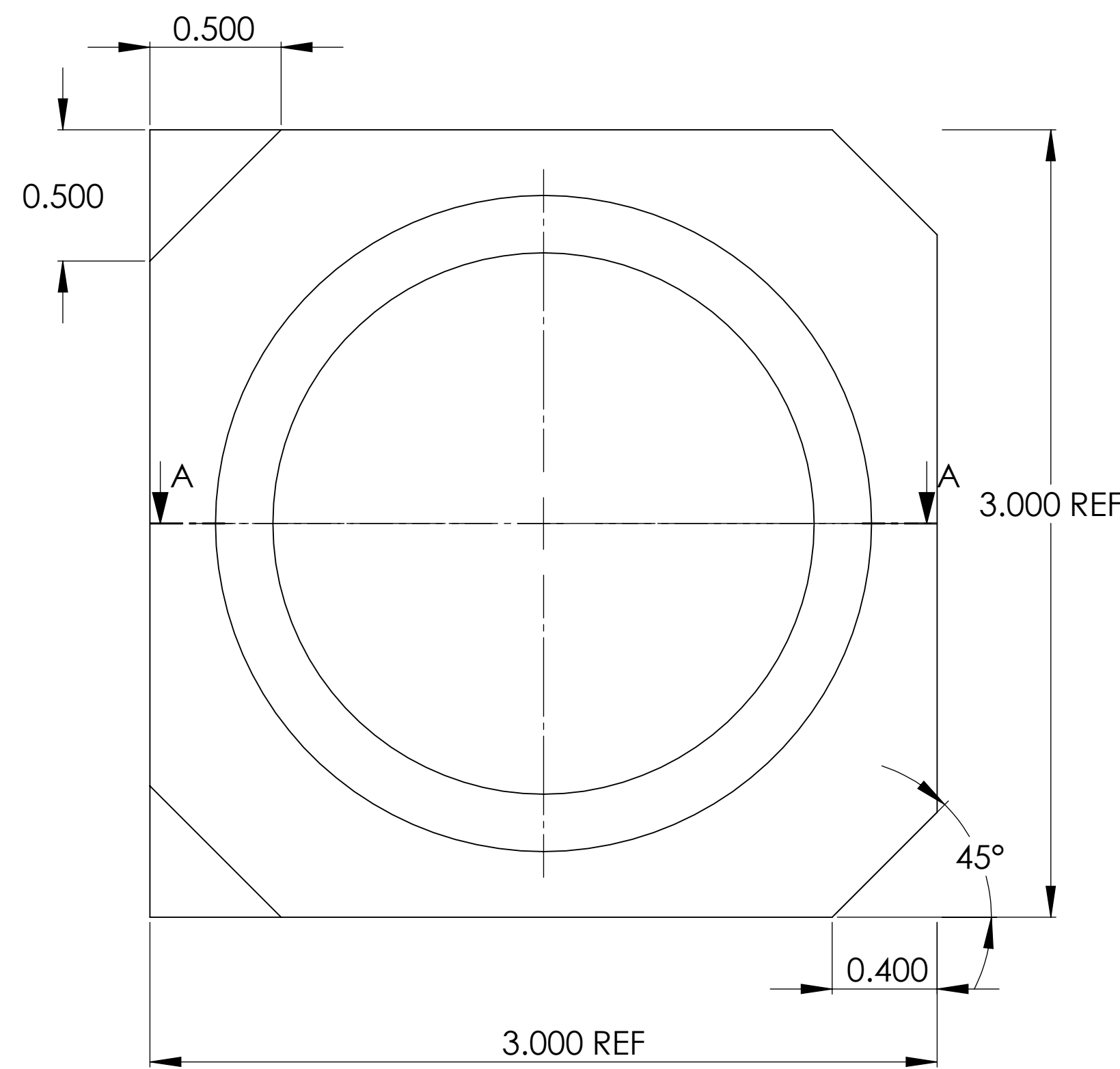
UNLESS OTHERWISE SPECIFIED
 DIMENSIONS ARE IN INCHES
 TOLERANCES
 DECIMALS ANGLES
 .XX" ± .03 .XXX" ± .010 ±1/2
 MACHINE FINISH 32/
 DO NOT SCALE DRAWING
 INTERPRET DWG BY ISO



PROJECTED VIEW
FOR REFERENCE ONLY
DO NOT SCALE



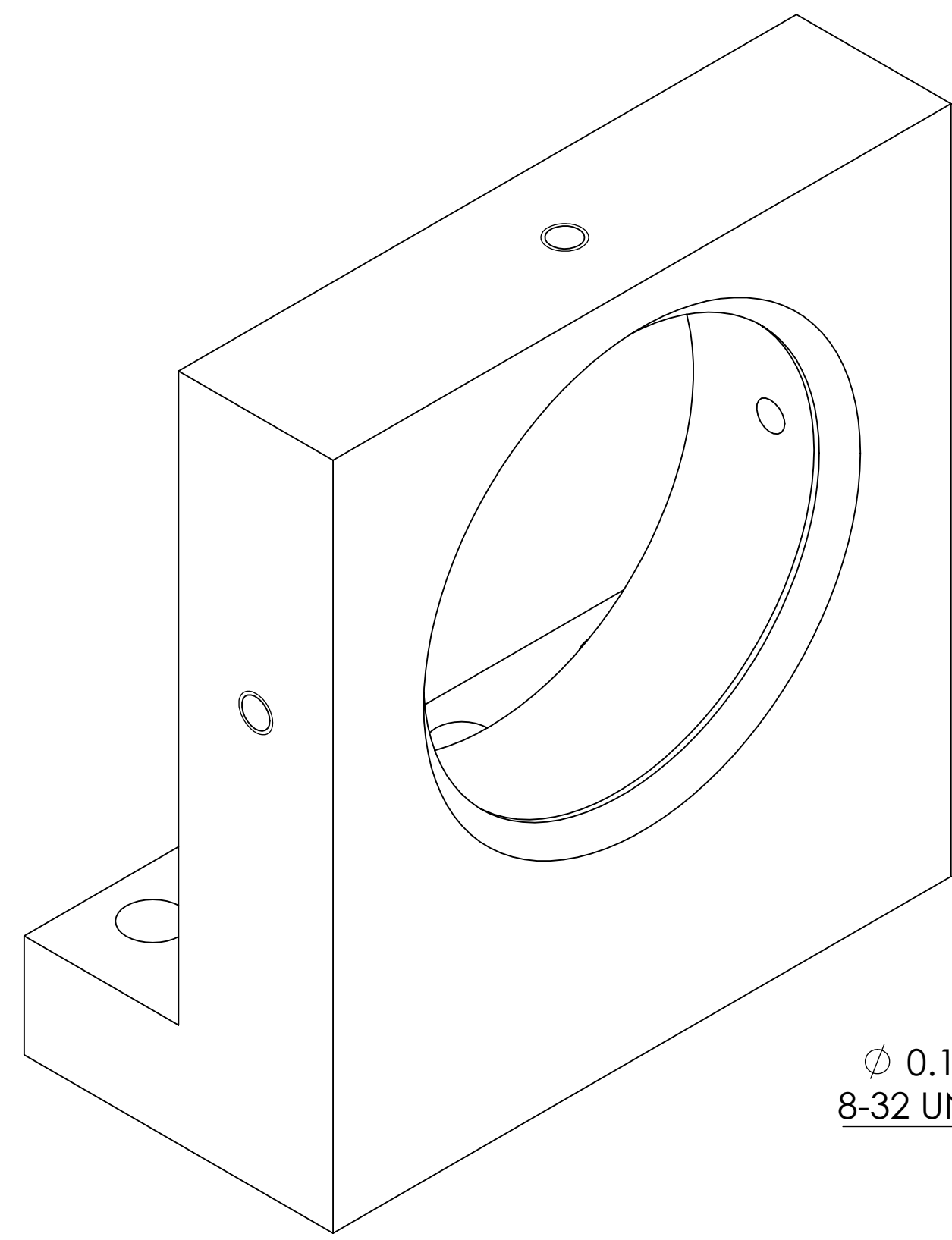
SECTION A-A
SCALE 2 : 1



3. FIT TO ASSEMBLY xxx
2. ALIGN USING DOWELL PINS
1. REMOVE ALL BURRS AND SHARP EDGES .003 TO .010

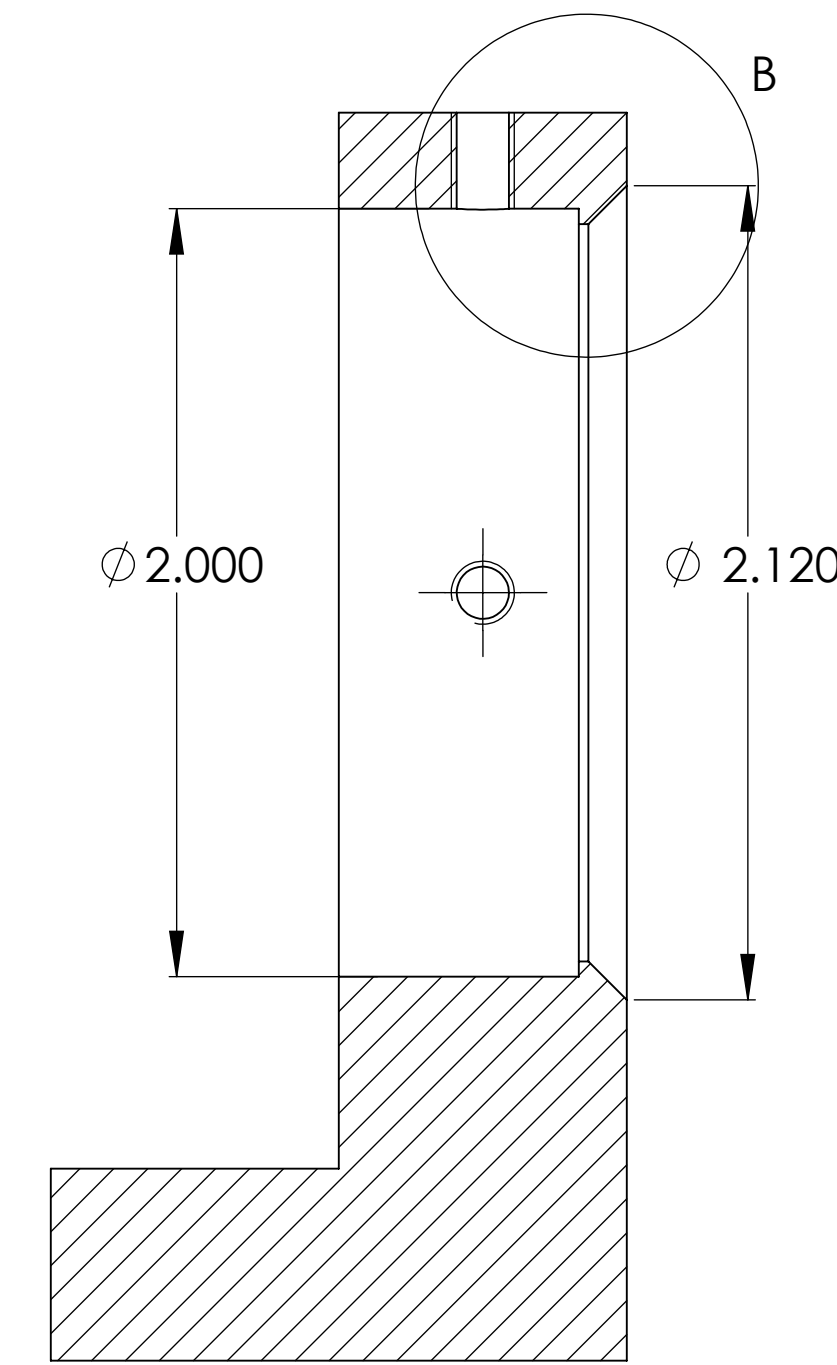
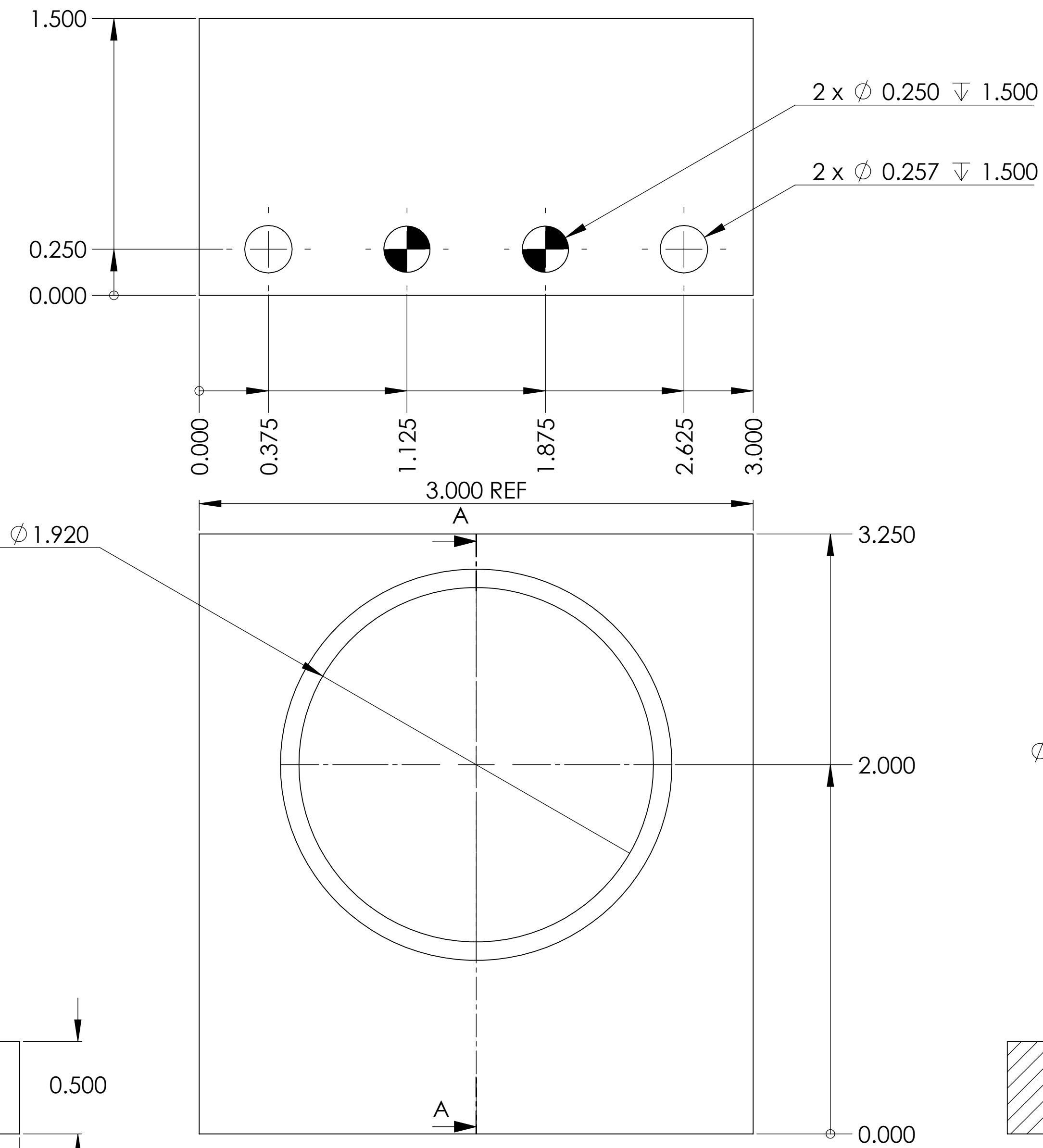
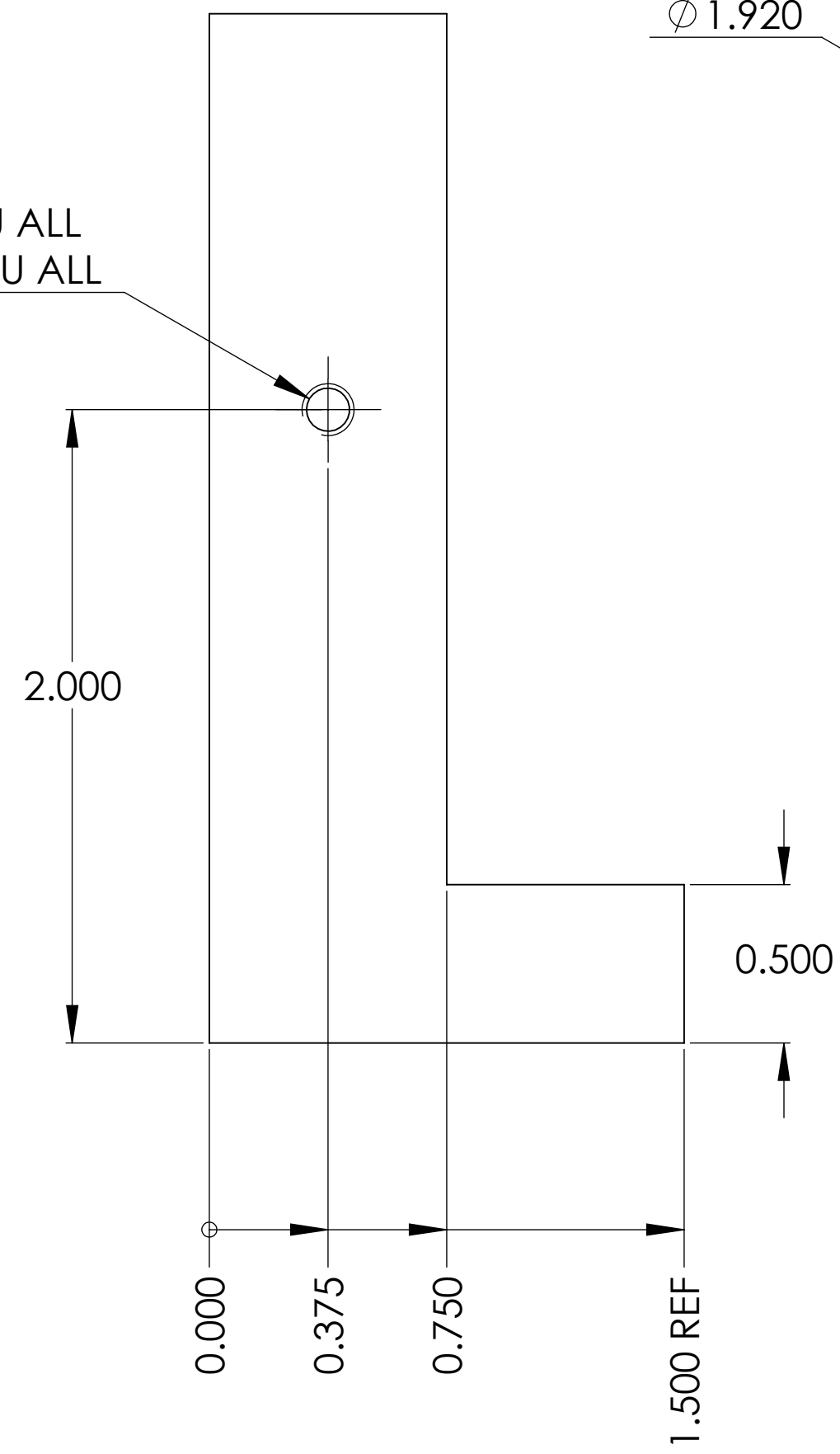
NOTES: UNLESS OTHERWISE SPECIFIED

UNLESS OTHERWISE SPECIFIED DIMENSIONS ARE IN INCHES TOLERANCES DECIMALS .XX" ± .03 .XXX" ± .010 ANGLES ±1/2		CONTRACT NO		Folkers E. Rojas UROP Production <i>Massachusetts Institute of Technology Boston, MA 02139</i>	
MACHINE FINISH 32/		APPVD			
DO NOT SCALE DRAWING INTERPRET DWG BY ISO		DATE		POETS on IRTF Interior Hardware: Optics 1 Holder	
MATERIAL AL 6061 USE CAST AL		DWN F.E. Rojas			
NEXT ASSEMBLY USED ON		CHK		SCALE D CAGE NO 10-022 FILE: PART REV B SCALE 2/1 UNCLASSIFIED	
APPLICATION		STRCT			
		MATL			
		THRM CONT			
		ENGR			
		DSGN SUPV			

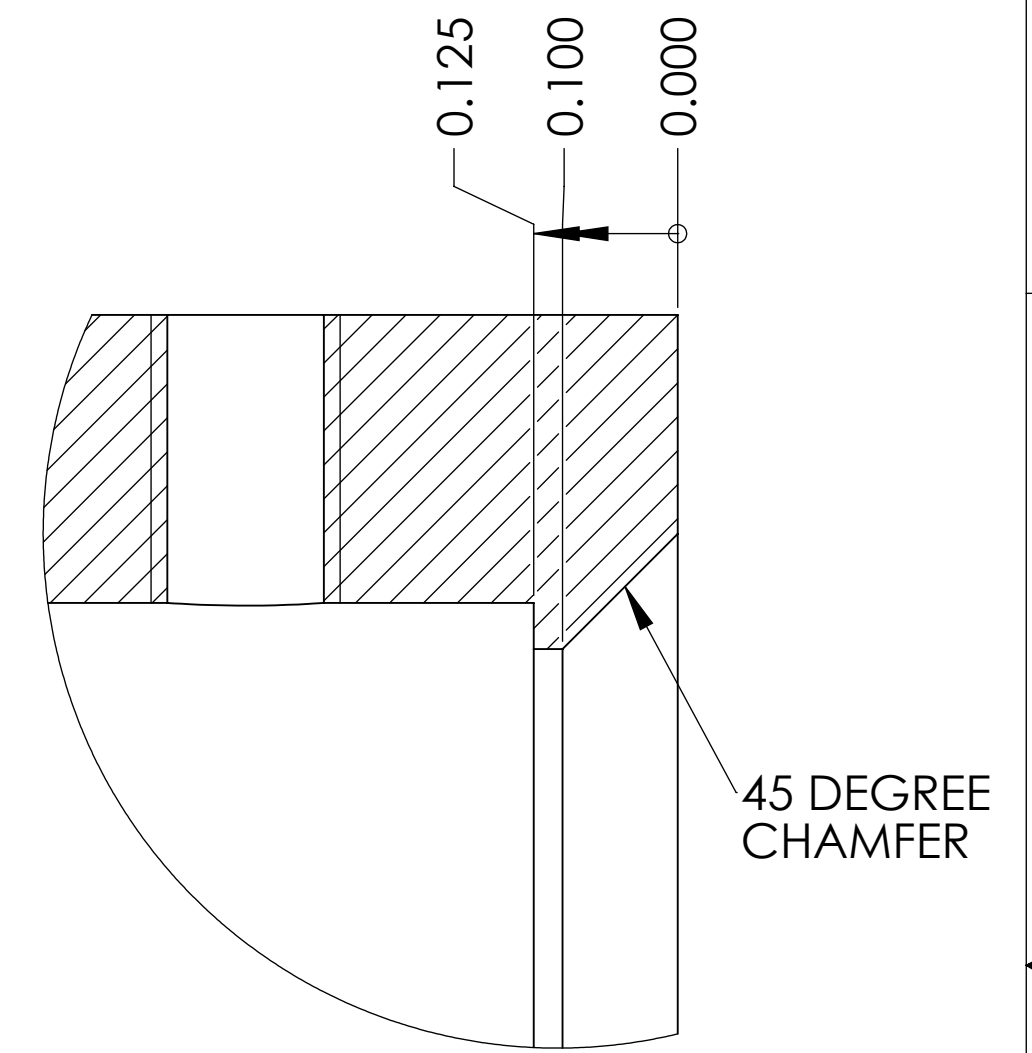


PROJECTED VIEW
FOR REFERENCE ONLY
DO NOT SCALE

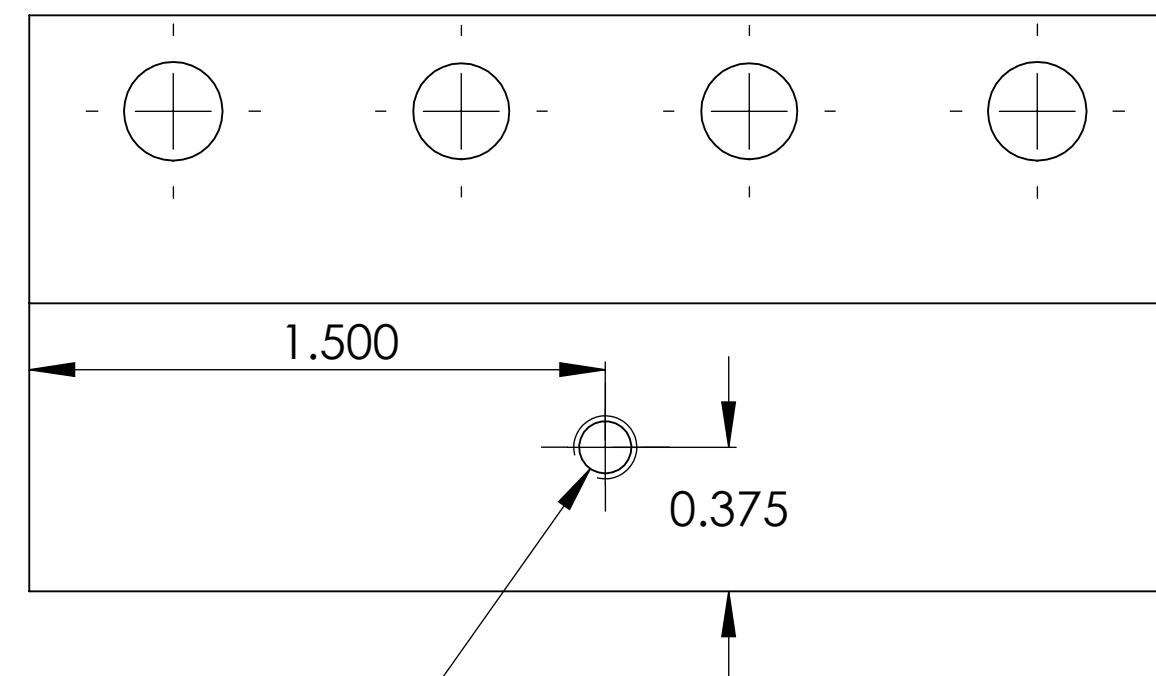
ϕ 0.136 THRU ALL
8-32 UNC THRU ALL



SECTION A-A



DETAIL B
SCALE 6 : 1

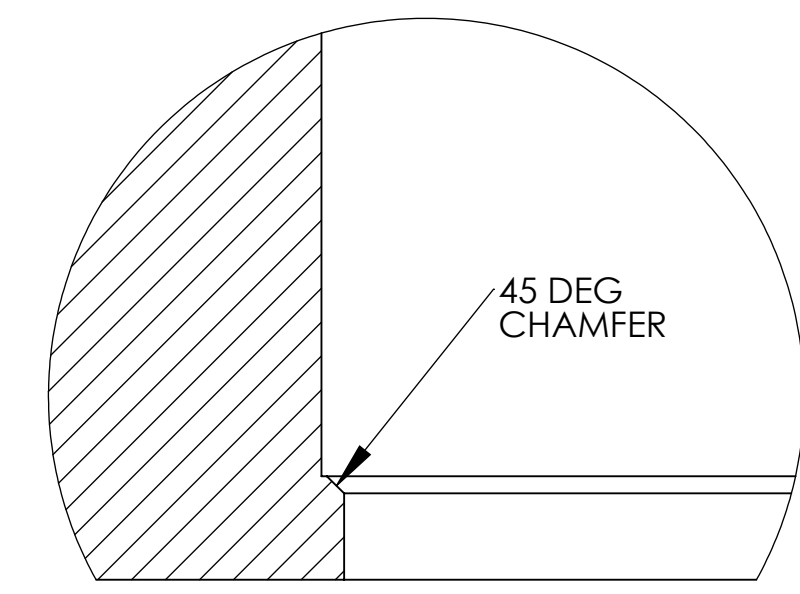
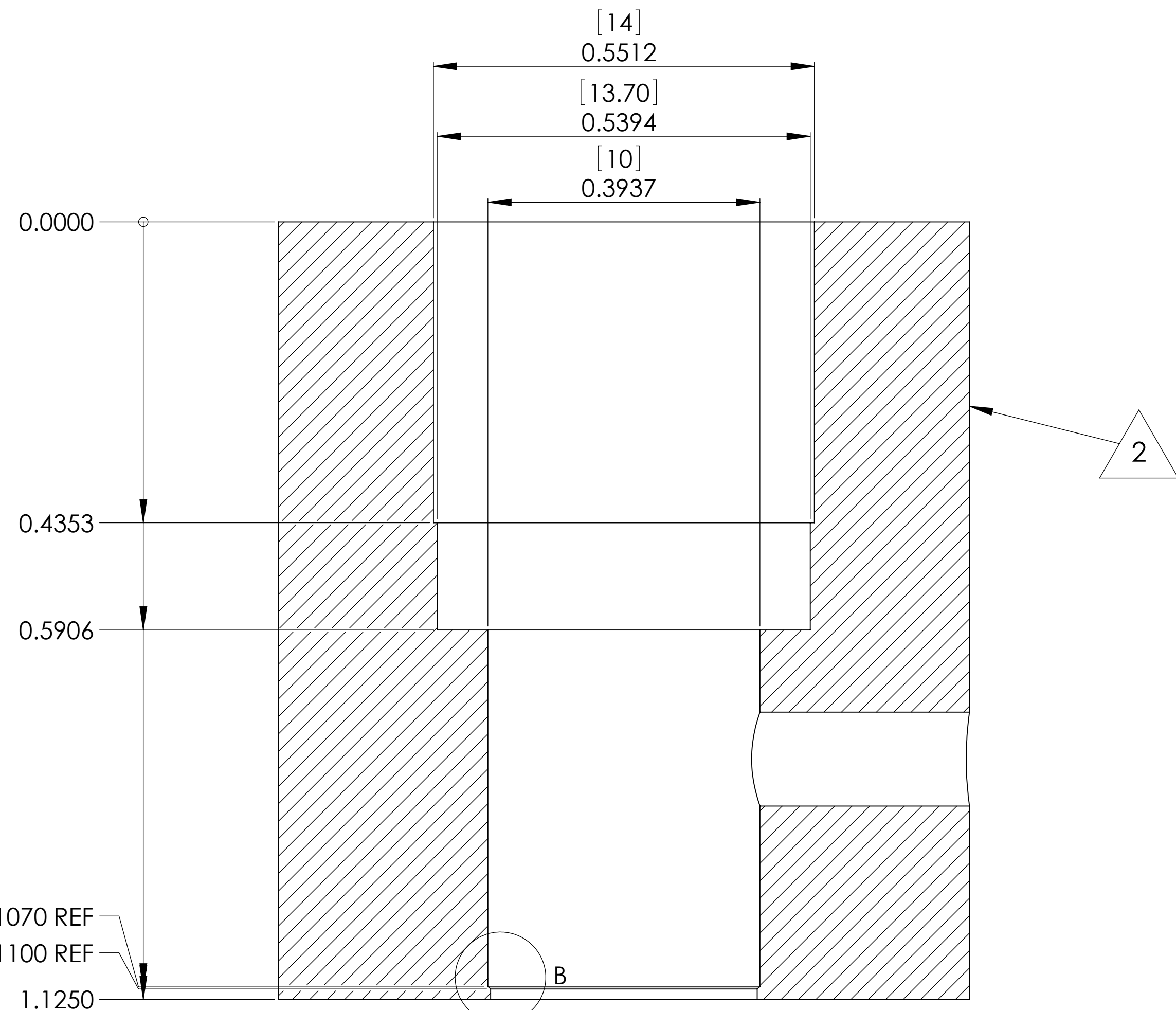
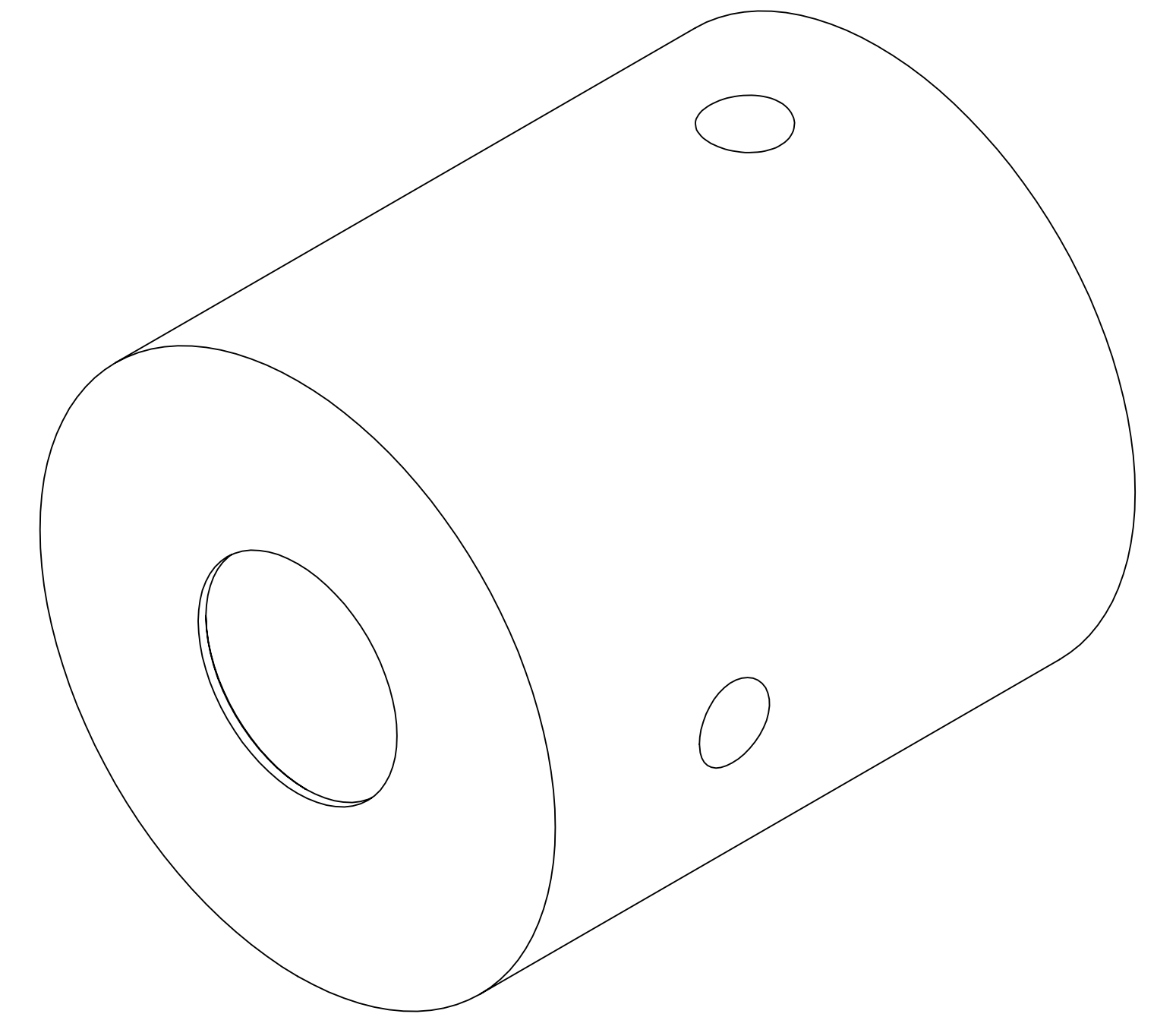
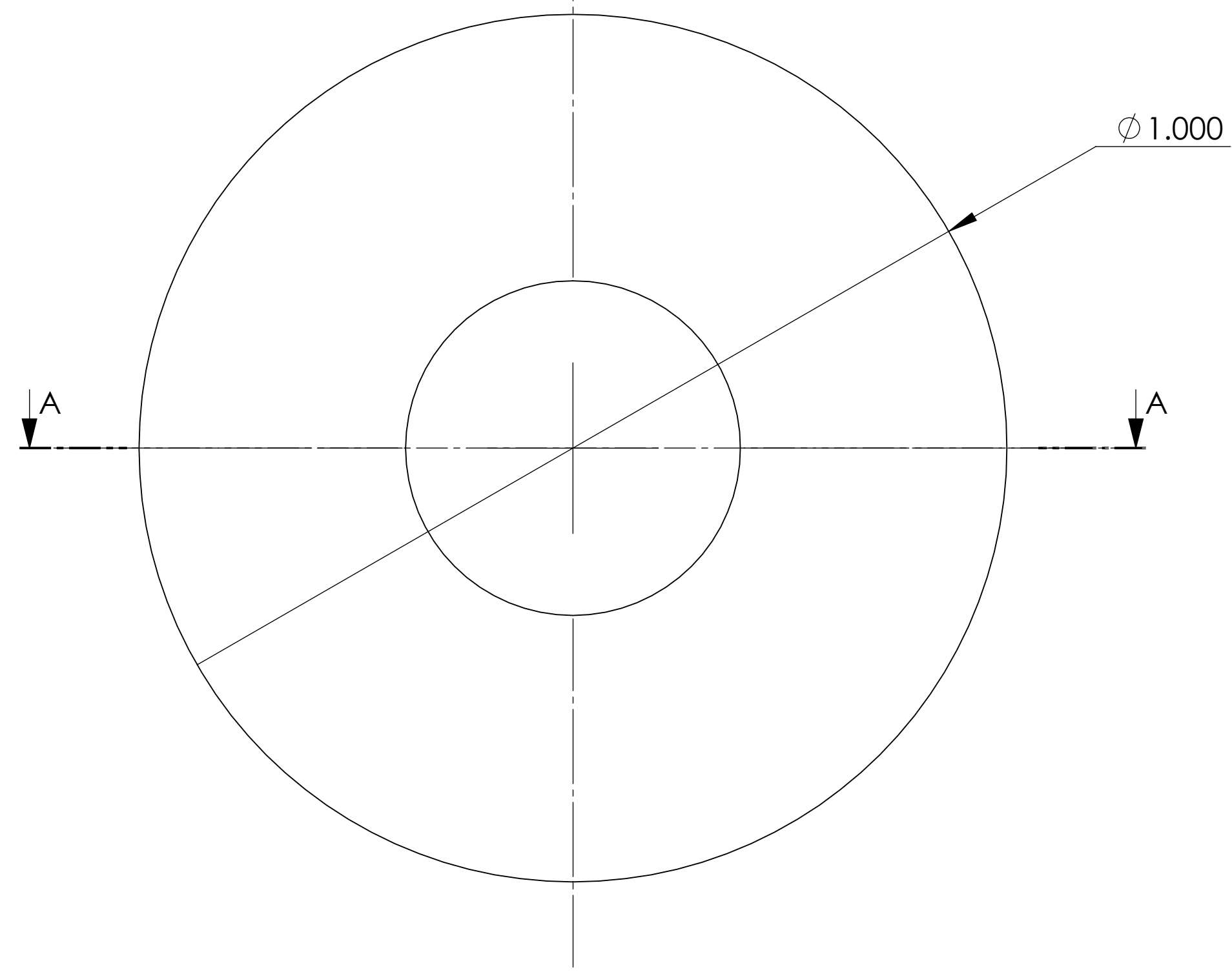


ϕ 0.136 ∇ 0.422
8-32 UNC ∇ 0.252

2. ALIGN USING DOWELL PINS
1. REMOVE ALL BURRS AND SHARP EDGES .003 TO .010

NOTES: UNLESS OTHERWISE SPECIFIED

		UNLESS OTHERWISE SPECIFIED DIMENSIONS ARE IN INCHES TOLERANCES DECIMALS ANGLES .XX" \pm .03 .XXX" \pm .010 \pm 1/2		CONTRACT NO		Folkers E. Rojas UROP Production <i>Massachusetts Institute of Technology Boston, MA 02139</i>	
		MACHINE FINISH 32/ DO NOT SCALE DRAWING INTERPRET DWG BY ISO		APPVD F.E. Rojas DATE			
		MATERIAL AL 6061 USE CAST AL		DWN		POETS on IRTF Optic Holders: 45 deg Mirror	
				CHK			
				STRCT		SCALE D	
				MATL		CAGE NO 10-023	
				THRM CONT		FILE: PART	
				ENGR		REV B	
				DSGN SUPV		SCALE 2/1 UNCLASSIFIED	
APPLICATION		10-021 NEXT ASSEMBLY USED ON					



DETAIL B
SCALE 30 : 1

- 3. ASSEMBLE TO FIT WITH PART 10-020
- 2. OD THREADED 14 TPI
- 1. REMOVE ALL BURRS AND SHARP EDGES .003 TO .010

NOTES: UNLESS OTHERWISE SPECIFIED

SECTION A-A
SCALE 7 : 1

UNLESS OTHERWISE SPECIFIED DIMENSIONS ARE IN INCHES TOLERANCES DECIMALS .XX" ± .03 .XXX" ± .010 ANGLES ±1/2		CONTRACT NO		Folkers E. Rojas UROP Production <i>Massachusetts Institute of Technology Boston, MA 02139</i>	
MACHINE FINISH 32 DO NOT SCALE DRAWING INTERPRET DWG BY ISO		APPVD F.E. Rojas DATE			
MATERIAL AL 6061 USE CAST AL		DWN F.E. Rojas		POETS on IRTF Optic Holders: Optic 2&3	
NEXT ASSEMBLY USED ON		CHK STRCT MATL THRM CONT			
APPLICATION		ENGR		SCALE D	CAGE NO 10-024
		DSGN SUPV		FILE: PART	REV A
				SCALE 2/1	UNCLASSIFIED {Date}

10-024-A